

# OACIS

Open Architecture Control Integrated System

## Industrial Network Module Setting for OACIS- 1XC & 2XC

Version 02.01



[www.atainc.com](http://www.atainc.com)

[ata@atainc.com](mailto:ata@atainc.com)

All Rights Reserved

---

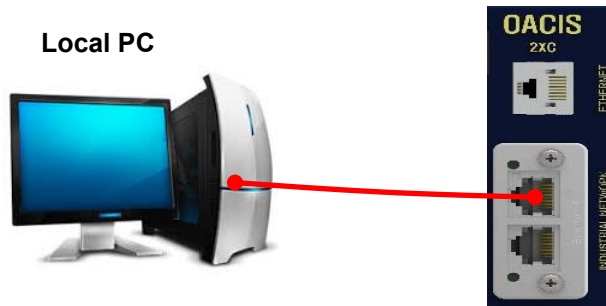
## CONTENTS

<b>I. NETWORK CONFIGURATION.....</b>	<b>3</b>
A. Install Program and Connection .....	3
B. New Setting .....	3
C. Change Existing Setting .....	4
<b>REVISION .....</b>	<b>5</b>

## I. NETWORK CONFIGURATION

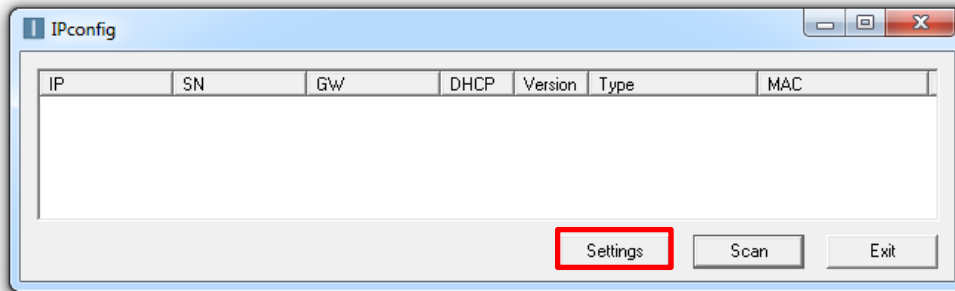
### A. Install Program and Connection

- Install IPConfig Setup.exe
- Install IPConfig Setup.exe on your PC
- Connect an ethernet cable between PC and Industrial Network Module

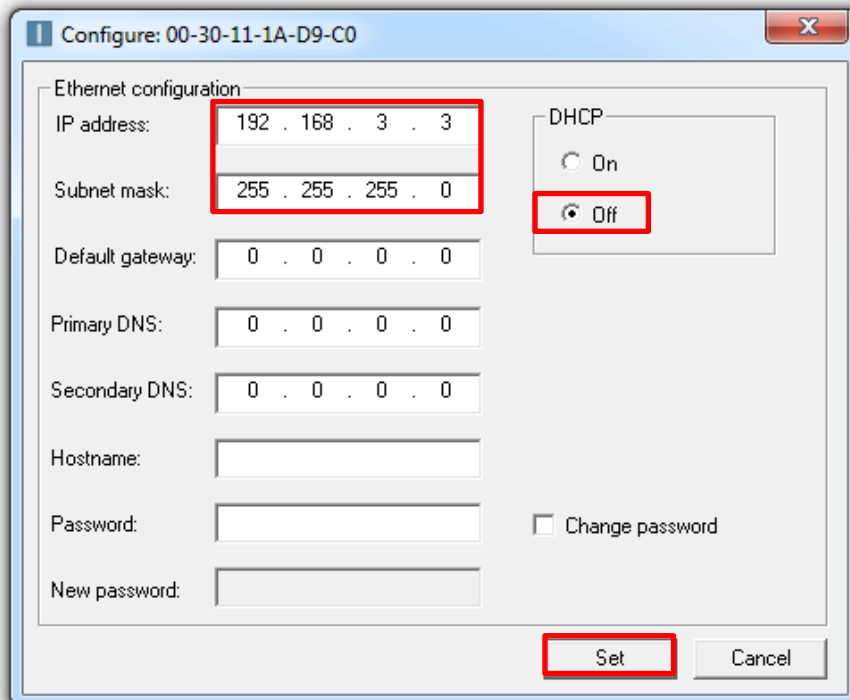


### B. New Setting

- Open IPConfig.exe and click Settings

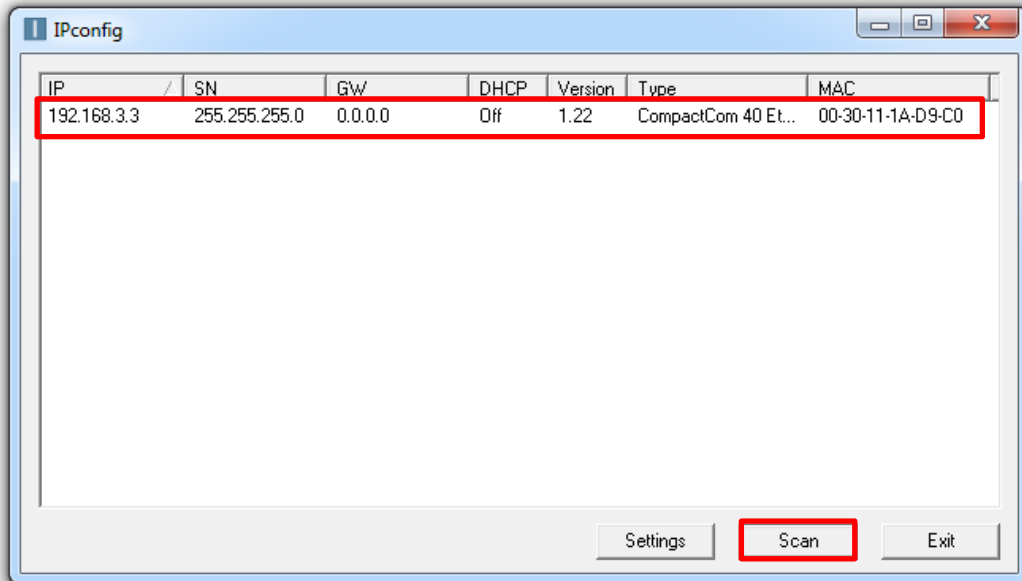


- Click DHCP as Off and assign IP address and Subnet mask
- Click Set

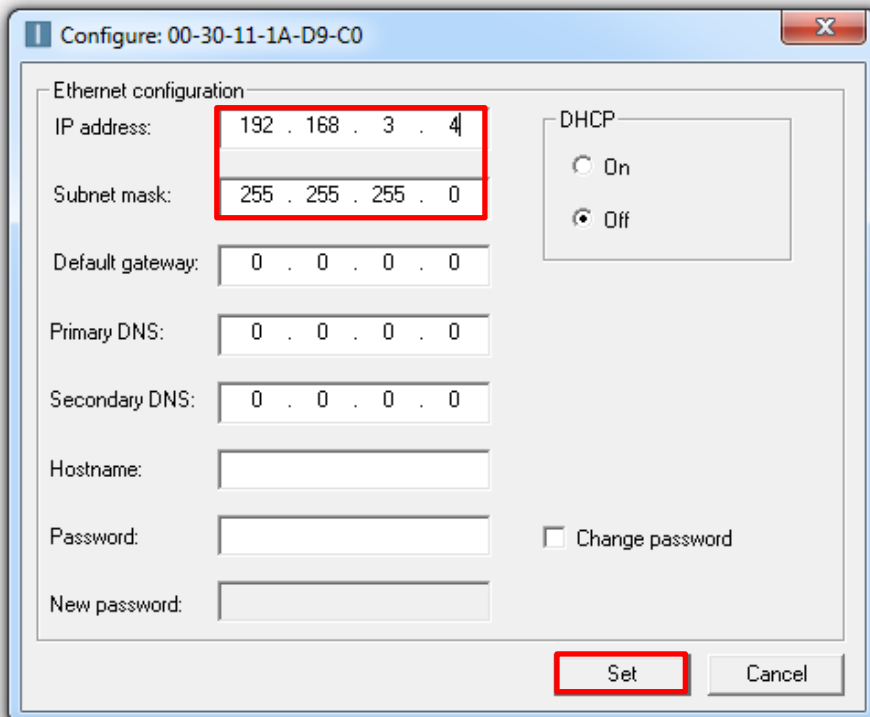


**C. Change Existing Setting**

- Open IPConfig.exe and then normally the existing setting is displayed automatically
- If not, click Scan



- Double click the existing setting
- Change it into what you want  
ex) IP : 192.168.3.4 / Subnet Mask : 255.255.255.0
- Click Set



**REVISION**

**v1.00: Engineering Released**

**v1.01: Download Site Added in I.A**

**v2.00: OACIS-1XC Released**

**v2.01: Mistyping Updated**